

## Areas to investigate

### KS2 progress

- There were no meaningful trends or differences for this measure.

### KS2 attainment

- In 2018, reading attainment of the expected standard was at or above national for the middle prior attainment group.

### KS1 attainment

- There were no meaningful trends or differences for this measure.

### Phonics in 2018

- A very large majority of pupils (93%) met the phonics expected standard in year 1.

### EYFS

- There were no meaningful trends or differences for this measure.

### Behaviour

- In 2017/18, the rate of overall absence (4.90%) was slightly above the national average for schools with a similar level of deprivation (4.67%).
- There were no permanent exclusions in the last three years. The national average in each of these years was zero.
- In 2016/17, there were no fixed term exclusions. The national average rate for schools with a similar level of deprivation was 0.99%. In 2016/17, there were no repeat exclusions. The national average rate for schools with a similar level of deprivation was 0.45%.

## Primary school context in 2018

**Phase of education:** Primary

**Headteacher:** Belinda King

**Pupils:** 224

**Gender:** Mixed

**Deprivation Quintile:** Highest 20% (0.4)

**Local authority:** Tower Hamlets

**Admissions policy:** Not applicable

**Ages:** 3-11

**Denomination:** Does not apply

**Special needs provision:**

**Ever 6 FSM %:** 37.8

**English additional language %:** 100.0

**SEN support %:** 11.6

**SEN with EHC plan %:** 0.9

### Ethnicity

- The largest ethnic groups are: Mixed - any other mixed background (2.4%), Asian or Asian British - Pakistani (4.3%), Asian or Asian British - Bangladeshi (88.4%), Black or Black British - African (2.4%), Any other ethnic group (1.8%).
- This school has 5 out of 17 possible ethnic groups. The average number of groups for this phase of education is 9.

### Number on roll

- There was nothing significant to report.

### Girls

- The percentage of girls in year 1 (60%) and year 5 (59%) was higher than all other year groups.

- The percentage of girls in year 2 (30%) and year 3 (39%) was lower than all other year groups.

### Disadvantaged

- The school was in the top 20% of all schools for the proportion of FSM (37.8%).
- The percentage of FSM in year 5 (56%) was higher than all other year groups.
- The percentage of FSM in year 1 (27%) was lower than all other year groups.
- There were no children looked after in the school.

**Notes:** Context sentences provide background information for inspectors. This is historic data for pupils as of the January 2018 census. For example year 10 in 2018 is the school's current year 11 cohort. Ethnicity and CLA sentences appear for every school. For further information on methodology see [www.gov.uk/government/collections/using-ofsted-inspection-dashboard](http://www.gov.uk/government/collections/using-ofsted-inspection-dashboard)

## Primary school context 2018

### English as an Additional Language

- The school was in the top 20% of all schools for the proportion of EAL (100.0%).

### Special Educational Needs

- There was a larger than average decrease in the percentage of SEN with EHC/statement pupils between 2017 and 2018.

### Prior Attainment

- There was nothing significant to report for this group.

## Relative progress for the past three years

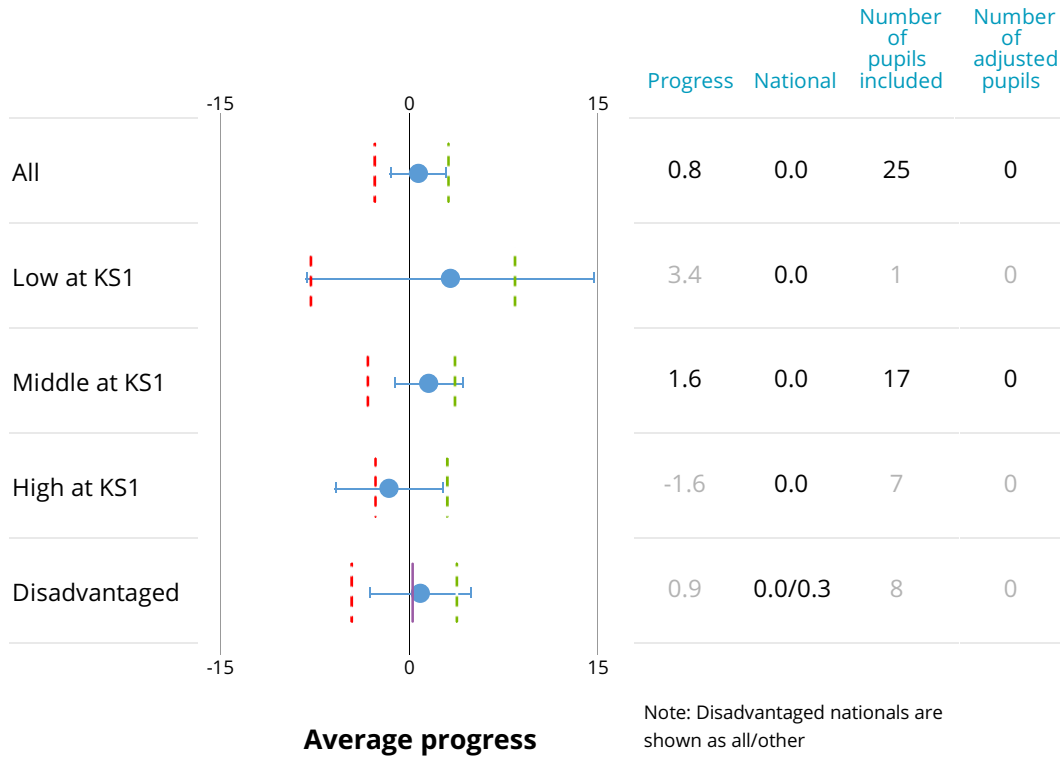
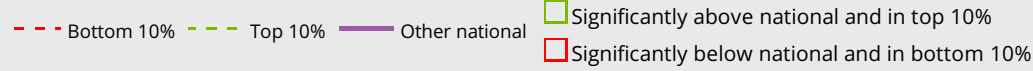
Progress quintiles based on rank of progress score

( ) Cohort Significantly above national Significantly below national

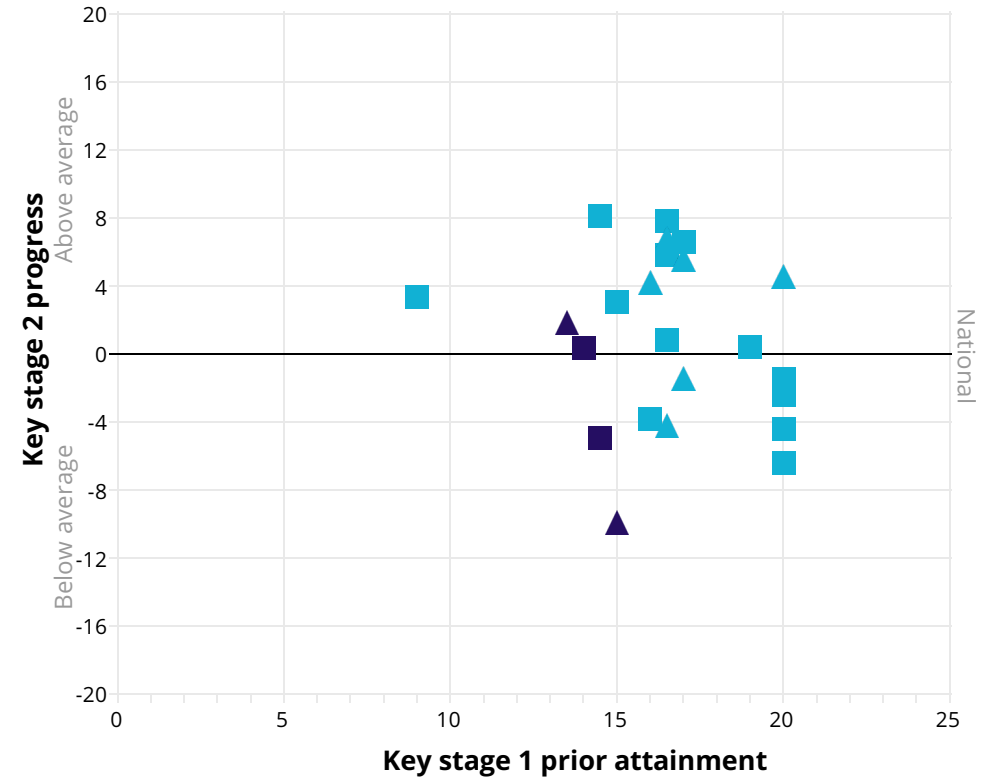
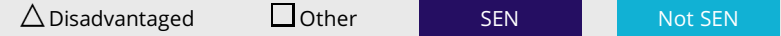
			Reading					Writing					Mathematics						
			Bottom 20%					Bottom 20%					Bottom 20%					Top 20%	
			Q5	Q4	Q3	Q2	Q1	Q5	Q4	Q3	Q2	Q1	Q5	Q4	Q3	Q2	Q1		
Overall	2016	(26)						(26)						(26)					
	2017	(21)						(21)						(21)					
	2018	(25)						(25)						(25)					
Low at KS1	2016	(1)						(1)						(1)					
	2017	(6)						(6)						(6)					
	2018	(1)						(1)						(1)					
Middle at KS1	2016	(21)						(21)						(21)					
	2017	(12)						(12)						(12)					
	2018	(17)						(17)						(17)					
High at KS1	2016	(4)						(4)						(4)					
	2017	(3)						(3)						(3)					
	2018	(7)						(7)						(7)					
Disadvantaged	2016	(10)						(10)						(10)					
	2017	(13)						(13)						(13)					
	2018	(8)						(8)						(8)					

**Notes:** Statistical significance for disadvantaged pupils is against the national for other pupils. Change in methodology or calculations is indicated by a dotted line. Quintiles for 2018 are based on adjusted progress scores. Previous years are based on unadjusted. Significance is only flagged for cohorts greater than 10. For cohorts of 10 or fewer, information is greyed out. For further information on methodology see [www.gov.uk/government/collections/using-ofsteds-inspection-dashboard](http://www.gov.uk/government/collections/using-ofsteds-inspection-dashboard)

# Reading progress in 2018



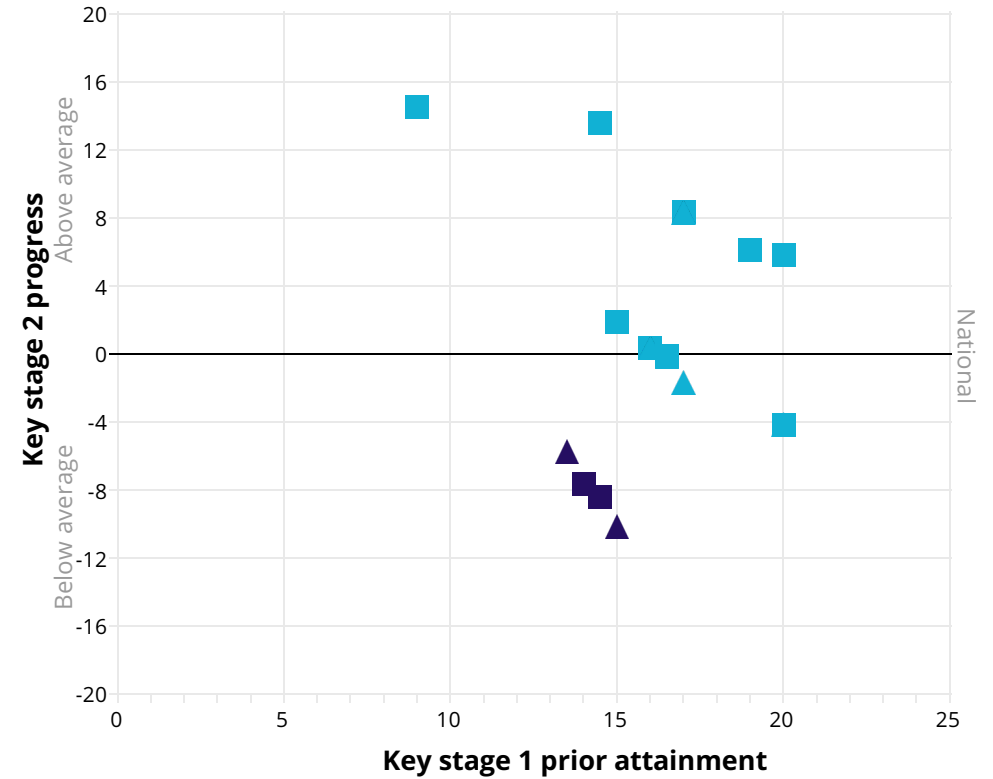
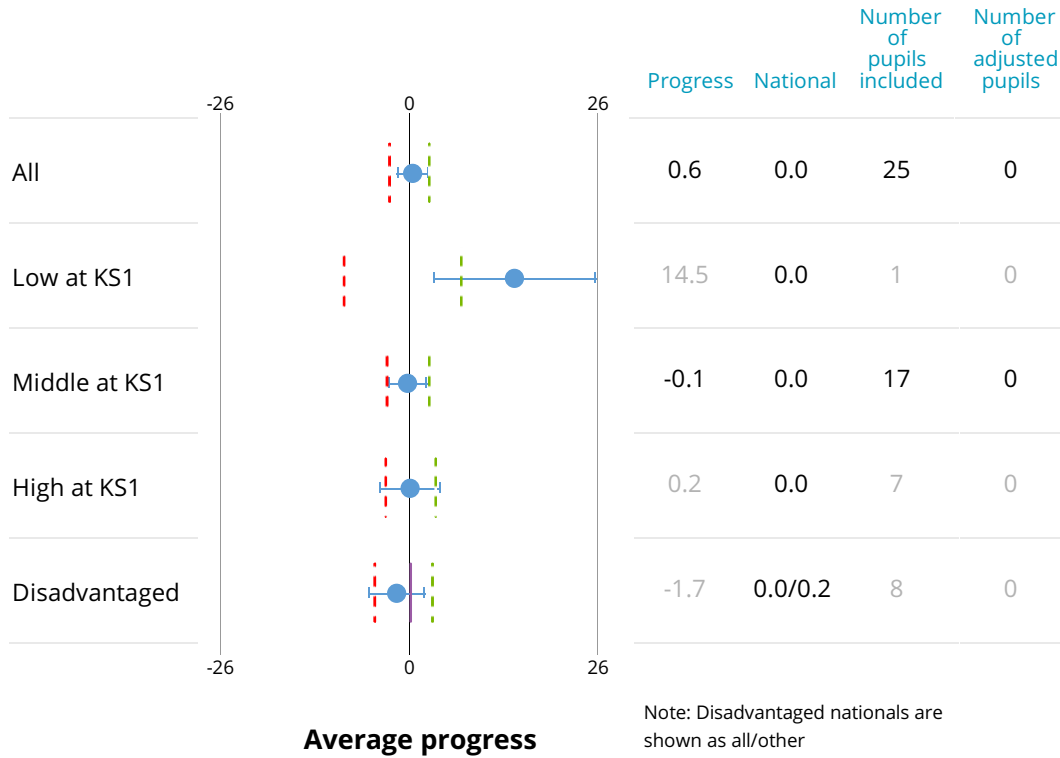
# Reading progress scatterplot



**Notes:** Progress measures are based on adjusted progress scores. Significance is only flagged for cohorts greater than 10. For cohorts of 10 or fewer, information is shown in grey. Prior attainment is based on overall KS1 attainment. For further information on methodology see [www.gov.uk/government/collections/using-ofsteds-inspection-dashboard](http://www.gov.uk/government/collections/using-ofsteds-inspection-dashboard)

# Writing progress in 2018

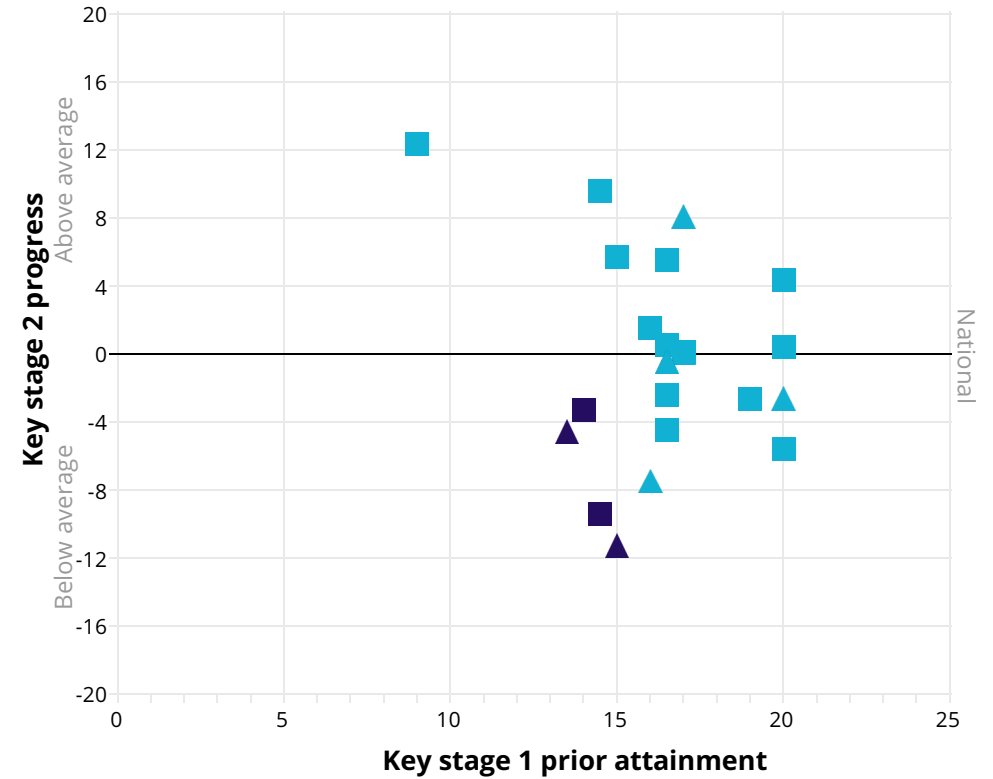
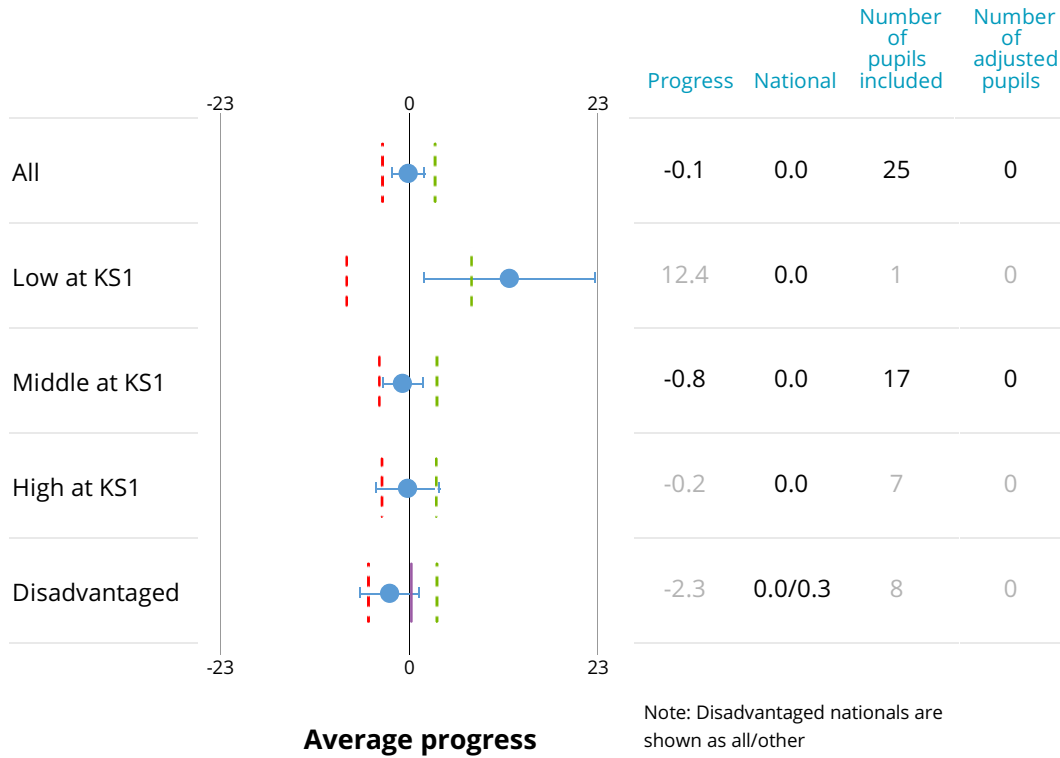
# Writing progress scatterplot



**Notes:** Progress measures are based on adjusted progress scores. Significance is only flagged for cohorts greater than 10. For cohorts of 10 or fewer, information is shown in grey. Prior attainment is based on overall KS1 attainment. For further information on methodology see [www.gov.uk/government/collections/using-ofsteds-inspection-dashboard](http://www.gov.uk/government/collections/using-ofsteds-inspection-dashboard)

# Mathematics progress in 2018

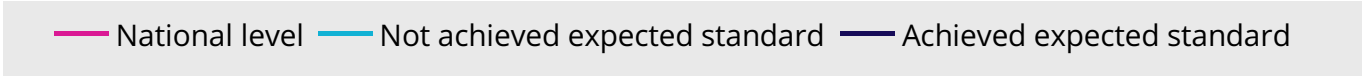
# Mathematics progress scatterplot



**Notes:** Progress measures are based on adjusted progress scores. Significance is only flagged for cohorts greater than 10. For cohorts of 10 or fewer, information is shown in grey. Prior attainment is based on overall KS1 attainment. For further information on methodology see [www.gov.uk/government/collections/using-ofsteds-inspection-dashboard](http://www.gov.uk/government/collections/using-ofsteds-inspection-dashboard)

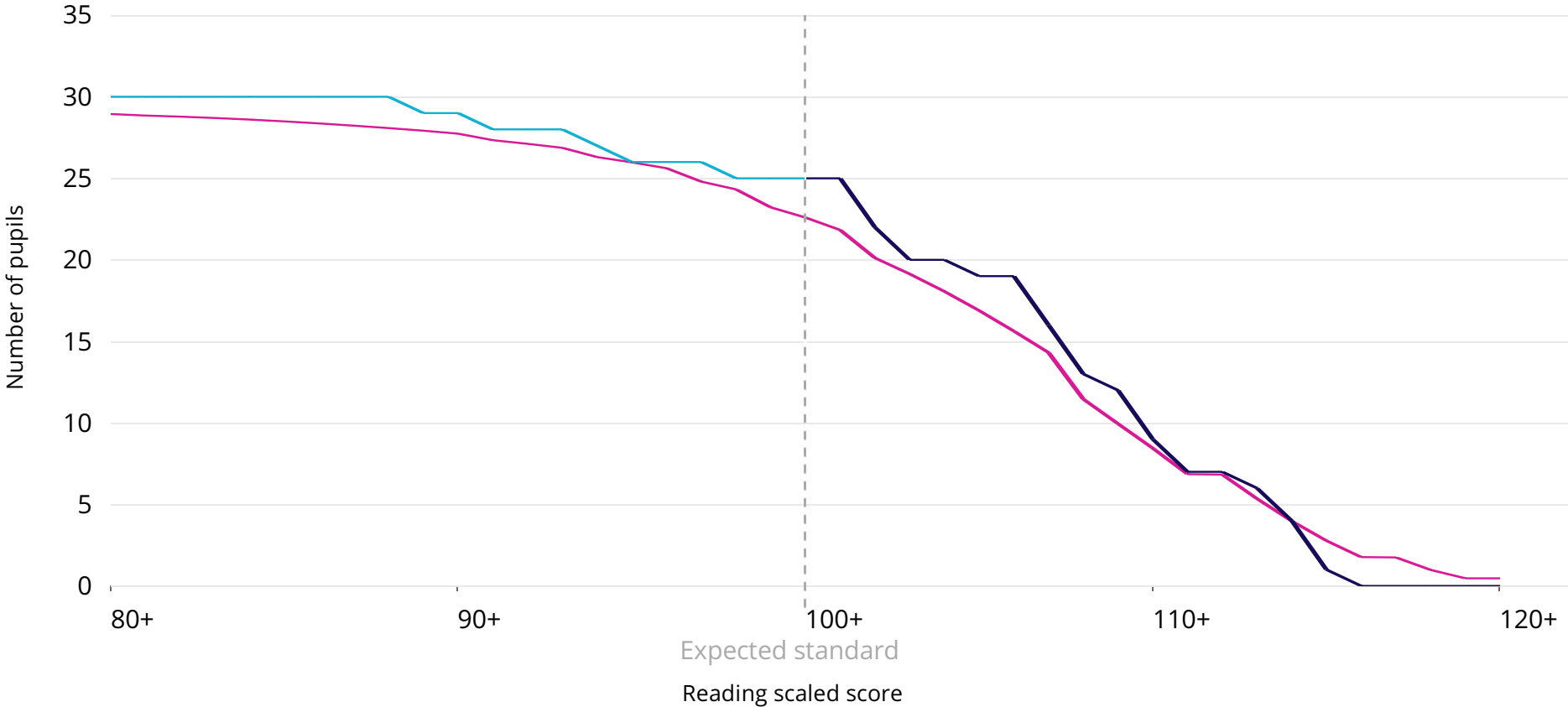
# Reading scaled scores 2018

This chart shows the distribution of total marks achieved by pupils in the school compared to the national.



Cohort = 30 One pupil relates to 3.3 percentage points.

In 2018, 83% of pupils achieved the expected standard, 8 percentage points above the national. This difference was not statistically significant.

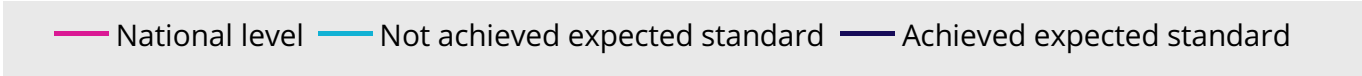


**Notes:** The plotted national line is the national reading percentage multiplied by the school reading attainment cohort at each average scaled score interval. For further information on methodology see [www.gov.uk/government/collections/using-ofsteds-inspection-dashboard](http://www.gov.uk/government/collections/using-ofsteds-inspection-dashboard)



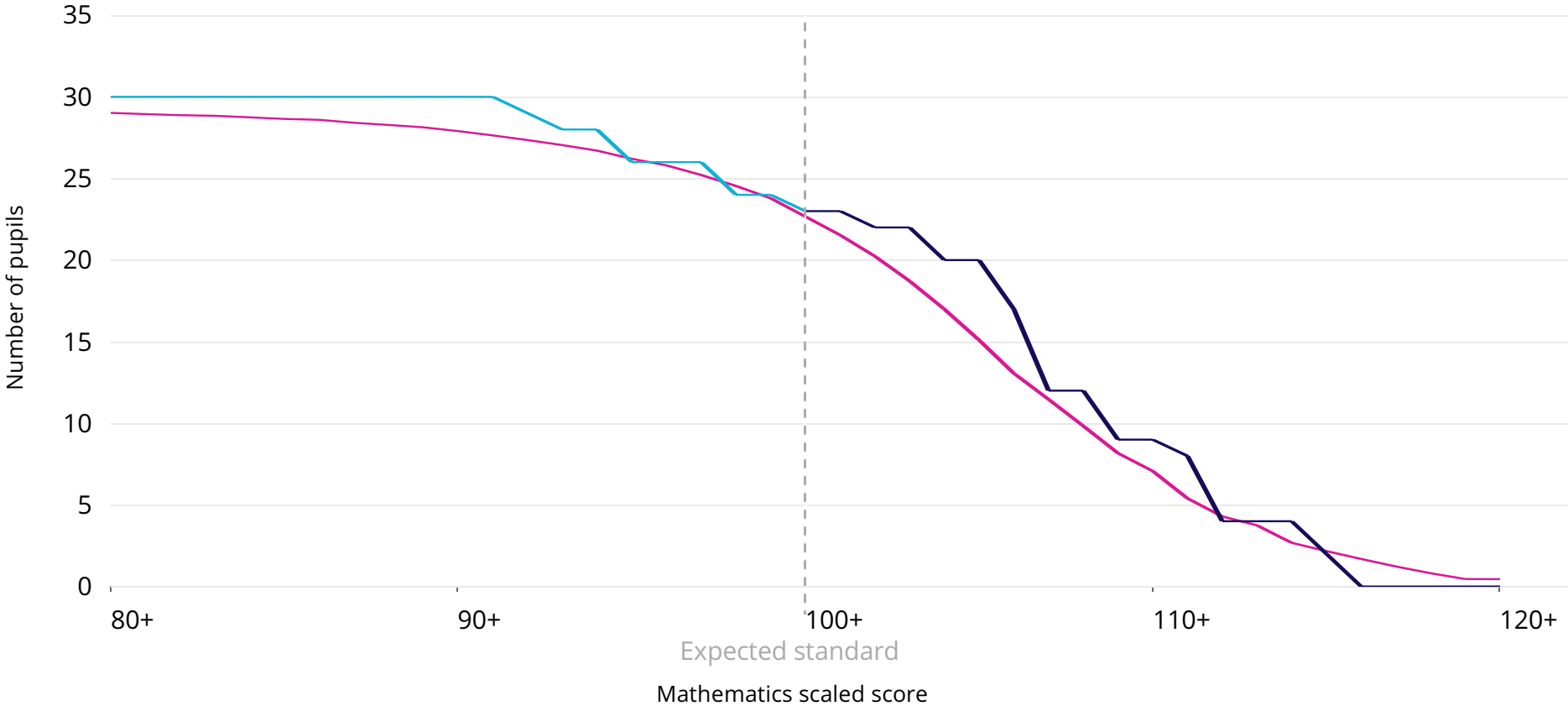
# Mathematics scaled scores 2018

This chart shows the distribution of total marks achieved by pupils in the school compared to the national.



Cohort = 30 One pupil relates to 3.3 percentage points.

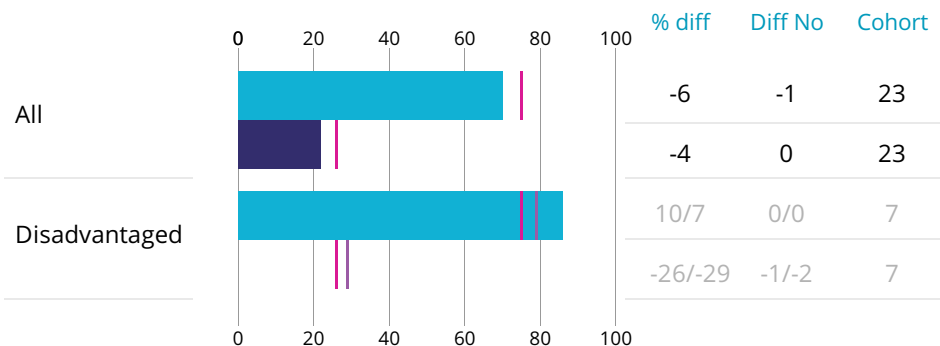
In 2018, 77% of pupils achieved the expected standard, 1 percentage point above the national. This difference was not statistically significant.



**Notes:** The plotted national line is the national mathematics percentage multiplied by the school mathematics attainment cohort at each average scaled score interval. For further information on methodology see [www.gov.uk/government/collections/using-ofsteds-inspection-dashboard](http://www.gov.uk/government/collections/using-ofsteds-inspection-dashboard)

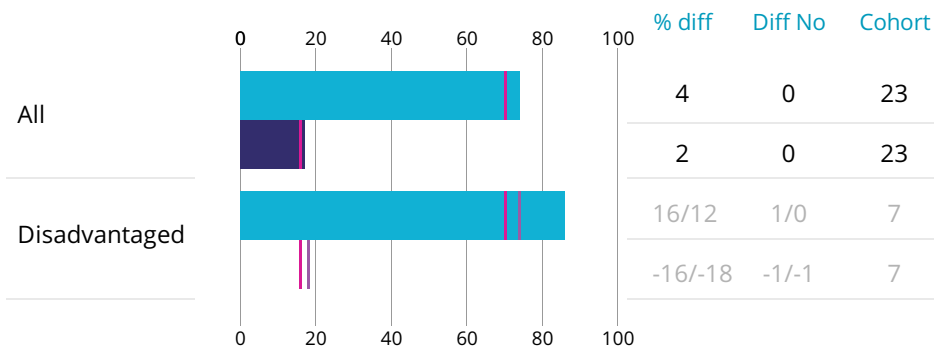
## Reading

Expected+ % Greater depth % National for all pupils Other national



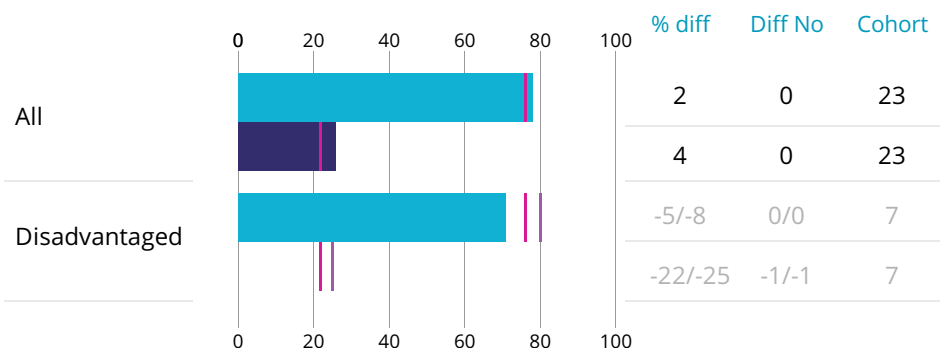
## Writing

Expected+ % Greater depth % National for all pupils Other national



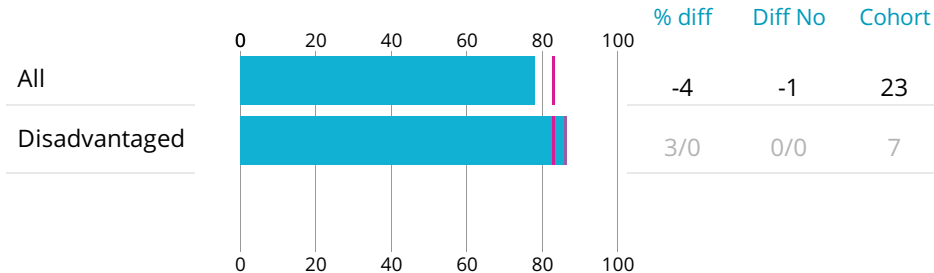
## Mathematics

Expected+ % Greater depth % National for all pupils Other national



## Science

Expected+ % National for all pupils Other national



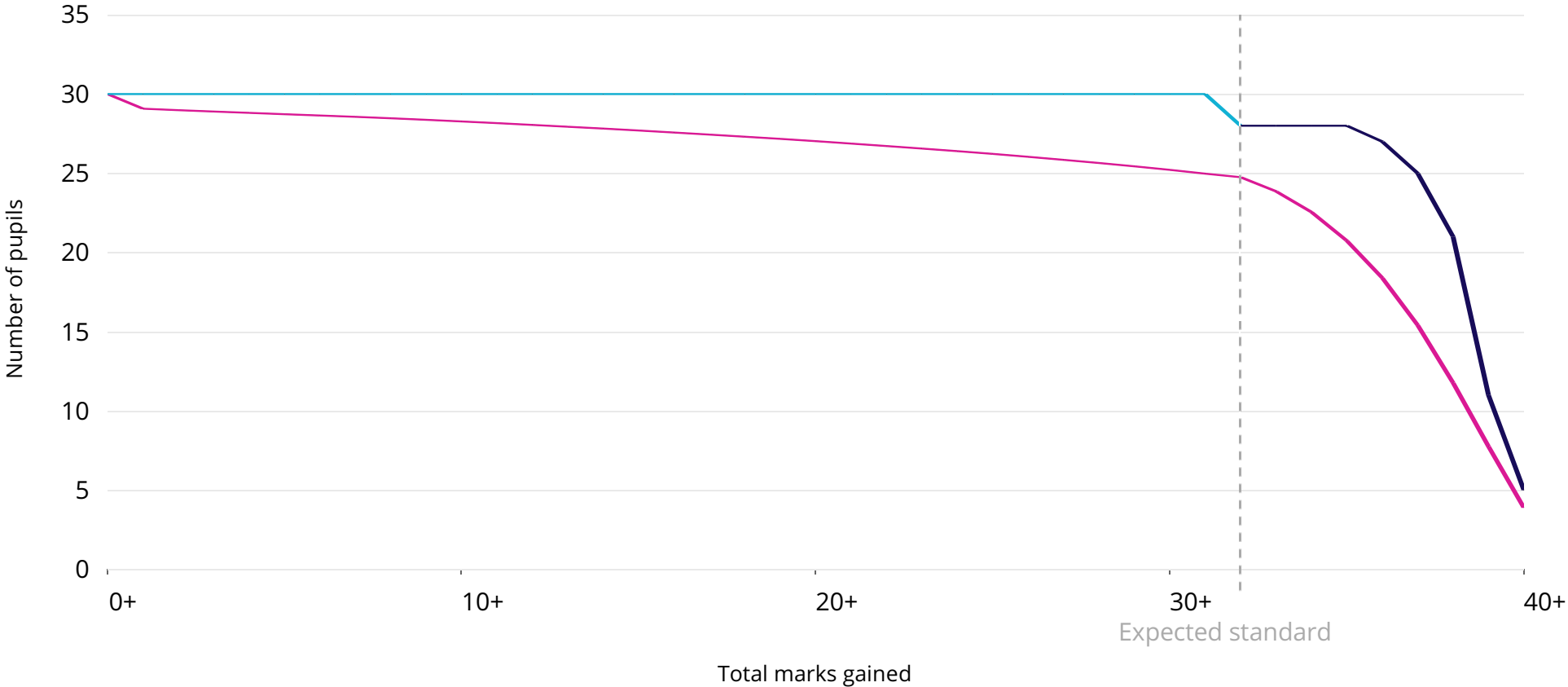
# Year 1 phonics marks 2018

This chart shows the distribution of total marks achieved by pupils in the school compared to the national.

— National level — Not achieved expected standard — Achieved expected standard

Cohort = 30 One pupil relates to 3.3 percentage points.

In 2018, 93% of pupils achieved the expected standard, 11 percentage points above the national proportion. This difference was not statistically significant.



**Notes:** The plotted national line is the national phonics attainment percentage at each phonics mark multiplied by the whole school phonics attainment cohort. The expected standard for phonics is 32+. For further information on methodology see [www.gov.uk/government/collections/using-ofsted-inspection-dashboard](http://www.gov.uk/government/collections/using-ofsted-inspection-dashboard)